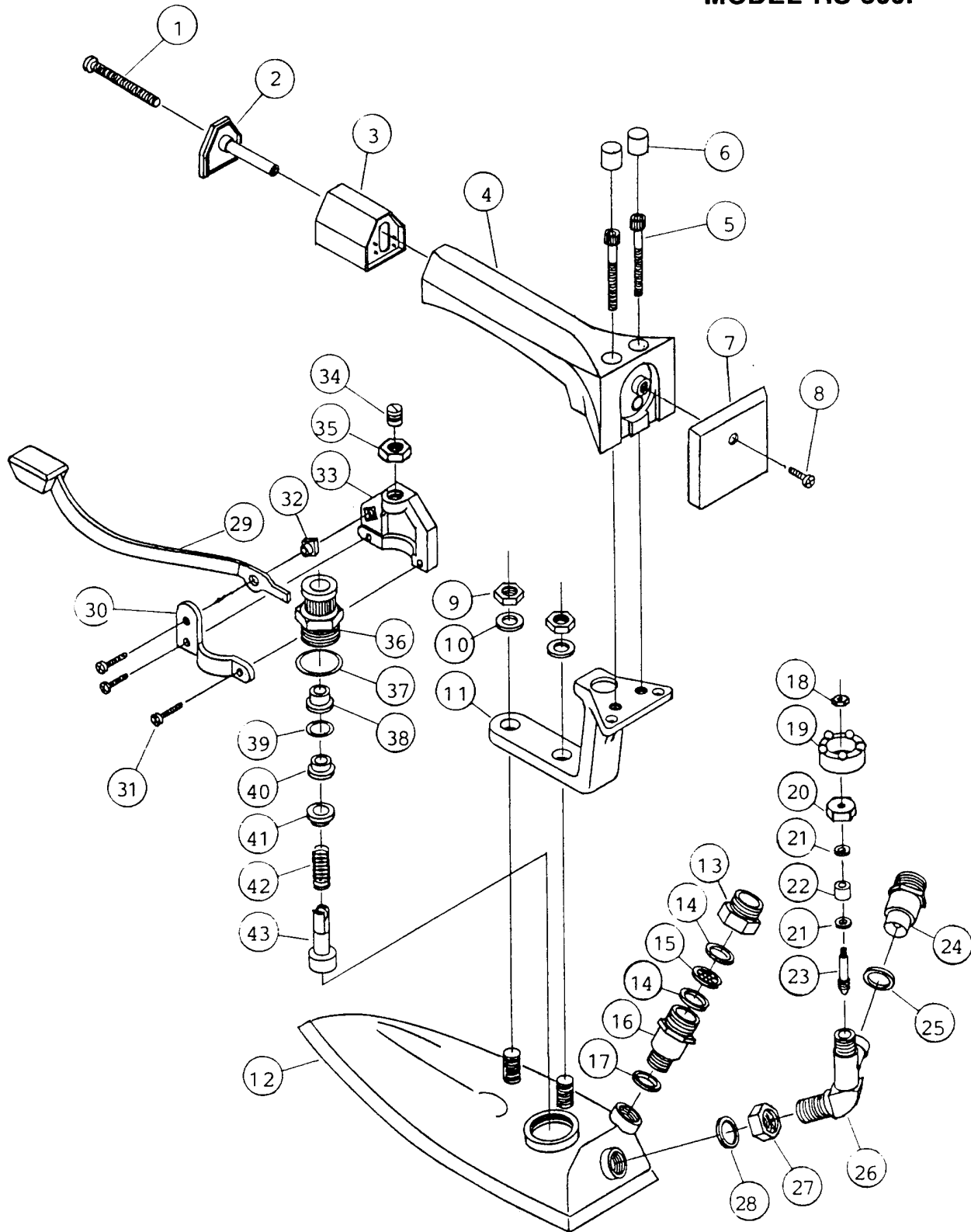


MODEL HS-300P



AristoCraft, Inc. provides the information contained herein in good faith but makes no representation as to its comprehensiveness or accuracy. This document is intended only as a guide to the appropriate precautionary handling of the material by a properly trained person using this product. Individuals receiving the information must exercise their independent judgement in determining its appropriateness for a particular purpose. ARISTOCRAFT, INC. MAKES NO REPRESENTATIONS OR WARRANTIES, EITHER EXPRESS OR IMPLIED, INCLUDING WITHOUT LIMITATION ANY WARRANTIES OF MERCHANTABILITY, FITNESS FOR A PARTICULAR PURPOSE WITH RESPECT TO THE INFORMATION SET FORTH HEREIN OR THE PRODUCT TO WHICH THE INFORMATION REFERS. ACCORDINGLY, ARISTOCRAFT, INC. WILL NOT BE RESPONSIBLE FOR DAMAGES RESULTING FROM USE OF OR RELIANCE UPON THIS INFORMATION.

PARTS LIST MODEL HS-300P

<u>No.</u>	<u>Description</u>	<u>Part No.</u>
1	Screw For Handle Front Cover	H8301
2	Lid For Handle Front Cover	H8461B
3	Handle Front Cover	H8461A
4	Handle	M8302
5	Bolt For Handle	M8303
6	Rubber Cap For Fixing Bolt	M8304
7	Name Plate	H300001
8	Screw For Name Plate	H8519
9	Nut For Bracket	111-01-6
10	Washer For Bracket Nut	111-01-6W
11	Handle Bracket	H30002
12	Iron Body	H30003
13	Hose Nipple Extension	H8671
14	Mesh Filter Packing	H8523
15	Mesh Filter	H8524
16	Threaded Hose Nipple	111-02-2A
17	Hose Nipple Packing	111-02-3A
18	Knob Nut	111-02-12
19	Knob For Exhaust Valve	111-02-11
20	Exhaust Valve Nut	111-02-10
21	Brass Ring	111-02-8
22	Teflon Spindle Packing	111-02-9
23	Exhaust Valve Spindle	111-02-7
24	Threaded Hose Nipple	111-02-2B
25	Hose Nipple Packing	111-02-3B
26	Exhaust Valve Body	H30004
27	Exhaust Valve Lock Nut	H30005
28	Packing For Exhaust Valve	111-02-6A
29	Push Lever	H9273
30	Lever Clamp Outside	H8283
31	Lever Clamp Screw	H8493
32	Fulcrum	H8284
33	Lever Clamp Inside	H8282
34	Adjusting Screw	H8287
35	Plastic Nut	H8286
36	Steam Valve Body	H9266
37	Valve Body Silicone O-Ring	H8467
38	Teflon Bushing	H8504
39	Silicone O-Ring For Valve Spindle	H8469
40	Teflon Cap Seal	H9218
41	End Piece For Valve Spindle Spring	H8470
42	Valve Spindle Spring	H8471
43	Steam Valve Spindle	H9267

Assemblies

Strainer Assembly Complete (Parts 13-15)	STR-40
Exhaust Valve Complete (Parts 18-28)	EVC-300P
Steam Flow Regulator (Parts 30-35)	H8600
Steam Valve Complete (Parts 36-43)	SVC-400
Steam Valve Repair Kit (Parts 37-43)	RK410